

# MANCO RAIL

Manco Rail offers a series of Mobile Elevating Work Platform (MEWP) for OLE construction, maintenance, bridge repairs, and anywhere a high platform is required, especially in difficult to reach areas.

The Manco RailBoom series is a four wheel rail/road drive, all terrain EWP with a large platform on an extendable arm. The large platform has a 300kg SWL capacity on narrow gauge track, and 400kg SWL capacity on standard and broad gauge tracks. The Manco RailBoom series MEWP feature a 2.3m width, 3-person, rotatable platform to allow excellent manoeuvrability amongst the OLE. The Manco RailBoom can also be fitted with a pantograph measuring tool to measure height and stagger.

For easy rail access the Manco RailBoom series MEWP can travel on road, off road, and on rail, with rapid transition changeover times. Once in place the platform can be fully operational in a matter of minutes.

Once on rail the Manco RailBoom series MEWP can travel at up to 15km/h, and once at the worksite, can operate at up to 5km/h at full reach and height — all from the work platform.

The Manco RailBoom series MEWP provides exceptional access to hard to reach operations offering a continuous 360-degree slew, with a maximum working height over 14m and a lateral outreach of over 8.0m\*.

THE NEW MANCO RAILBOOM SERIES OF MOBILE ELEVATING WORK PLATFORMS, WILL HAVE YOU

## STAYING ON TRACK, STAYING AHEAD

\*on Narrow Gauge Track—extendable on Standard + Broad Gauge Track

# RAILBOOM

MOBILE ELEVATED WORK PLATFORM

**RAILBOOM300**

**RAILBOOM400**

**RAILBOOM300-MG**

300KG SAFE WORKING LOAD  
(NARROW GAUGE)

400KG SAFE WORKING LOAD (STANDARD /  
BROAD GAUGE)

8.0M HORIZONTAL REACH ON 5° CANT

14.0M VERTICAL REACH

CONTINUOUS SLEW

2300MM WIDE PLATFORM

UNDERSLUNG ROTATING PLATFORM

EMERGENCY OFF-TRACKING CAPABILITY

ANTI-ENTRAPMENT SAFETY DEVICE AS  
STANDARD

4WD TRACTION ON ROAD AND RAIL

AS7502:2016 COMPLIANT

OM94001 COMPLIANT

AS1418.10 COMPLIANT

OPTIONAL FIRE SUPPRESSION SYSTEM

OPTIONAL PANTOGRAPH WITH ELECTRONIC  
HEIGHT AND STAGGER DOWNLOAD

OPTIONAL 1500KG PAYLOAD SINGLE AXLE  
TRAILER



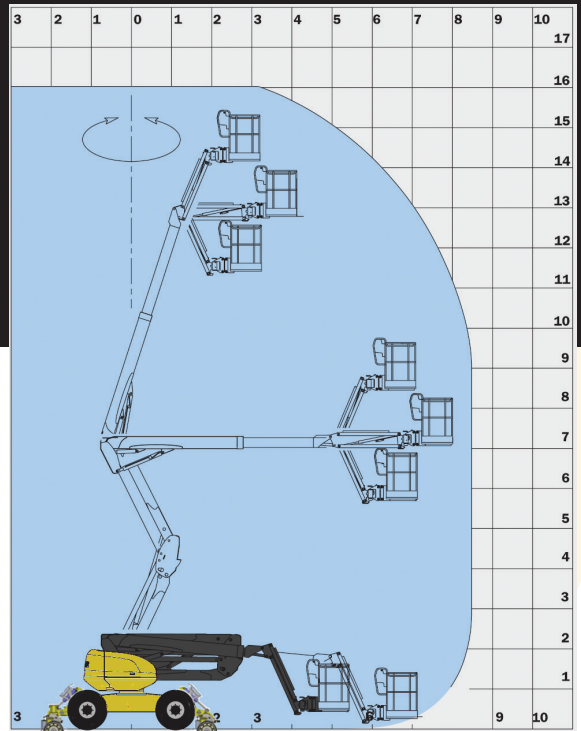
# MANCO RAIL

OVERHEAD HIRING SPECIALISTS

## RAILBOOM

MOBILE ELEVATED WORK PLATFORM

RAILBOOM300 RAILBOOM400 RAILBOOM300-MG



### RAIL MODE

**Track Gauge:** Broad (1600mm), Standard (1435mm), Narrow (1067mm), Multigauge (1067-1600mm)

**Wheelbase:** 3.9m

**Maximum Travel Speed:** 15km/h

**Working Speed:** 0 - 5km/h forward or reverse at full reach and height

**Maximum Grade:** 5.5% - 1:18

**Maximum Cant:** 5° (200mm on Broad Gauge Track)

**Rail Wheels:** 450mm forged EN13262 Grade ER8 (E1, ANZR1, LW3 + other profiles available on request)

**Drive:** 4WD Hydrostatic

**Braking:** All four wheels, failsafe spring applied hydraulic release dynamic brakes, and independent spring applied parking brakes

**Off tracking:** Full Emergency off Tracking Capability

### PLATFORM FEATURES

**Platform Size:** 2.30 x 0.93m

**Turret Rotation:** 360° continuous slewing

**Platform Rotation:** +/-90°

**Jib Tilting:** +/-70°

**Maximum Chassis Tilt:** +/- 5°

**Anti-entrapment:** Standard

**Deadman Foot Pedal:** Standard

**Extension Restriction:** Standard

### PANTOGRAPH (OPTIONAL)

Installed on EWP boom

Measure height & stagger with full electronic monitoring device with in-basket LCD operator screen

Information downloadable for analysis

### PRIME MOVER OVERVIEW

**Engine:** KubotaV2403-M 34kW

**Fuel Tank Capacity:** 52 litres

**Hydraulic Oil Tank Volume:** 54 litres

**Hydraulic Valving:** Proportional control

**Emissions:** Tier 4 and EU stage 3A

**Environmental Noise:** 101dB

**Tyres:** 18" Foam Filled

**Drive:** 4WD hydrostatic

**Steering:** 4 Wheel Steer

	Narrow Gauge	Standard/Broad Gauge	Multi-Gauge (1067-1600)
Working Height	15.5m	16m	15.5m
Platform Height	14.0m	14.5m	14.0m
Max Reach	8.0m	8.5m	8.0m
Safe Working Load	300kg	400kg	300kg

OVERALL DIMENSIONS	
Length: 7.6m	Height: 2.6m
Width: 2.3m	Tare Weight: 12,500kg



Excellent ground clearance when off-rail



Additional spring applied, hydraulic release fail-safe brakes on all wheels, additional to independent fail-safe parking brakes



### AUSTRALIA

20 Hargraves Place, Wetherill Park, Sydney  
Phone + 61 2 9756 6592 | [mancorail.com.au](http://mancorail.com.au)

### NEW ZEALAND

121 Harris Road, East Tamaki, Auckland  
Phone + 64 9 274 9862 | [mancorail.co.nz](http://mancorail.co.nz)

Manufactured in New Zealand for Australasian operations

